

**RAIDON**

***InTANK***  
***iR2777-S3***

*User Manual*

» InTANK iR2777-S3 User Manual.....	1
1. Environmental Requirements .....	1
2. Product Appearance and Packaging Content .....	1
3. Hardware Requirements and Precautions .....	2
4. RAID Mode Setting.....	3
5. Hardware Installation Procedure .....	3
6. Computer Set Up.....	5
7. GUI Monitoring Software and Firmware Update .....	6
8. Frequently Asked Questions .....	9
» InTANK iR2777-S3 產品使用說明 .....	10
1. 環境需求 .....	10
2. 產品外觀及包裝內容 .....	10
3. 硬體需求與注意事項 .....	11
4. 設定 RAID 層級.....	11
5. 硬體安裝 .....	12
6. 電腦設定 .....	14
7. GUI 功能說明與韌體更新.....	15
8. 常見問題 .....	18

## Introduction

Thank you for purchasing RAIDON products. This manual will introduce the InTANK iR2777-S3 Series. Before using your InTANK iR2777-S3, please read this manual thoroughly. Although all information contained in this user manual has been carefully verified before publishing, however, the actual product specification will be based on the time of delivery from RAIDON. Any updates to the product specifications or relevant information may be found on [www.raidon.com.tw](http://www.raidon.com.tw). Products are subject to change without prior notifications.

If you have any questions regarding the products of RAIDON, or you would like to know the latest product information, user manual update, or firmware update, please contact your local supplier or visit [www.raidon.com.tw](http://www.raidon.com.tw) for further information.

Copyright © RAIDON TECHNOLOGY, INC. All rights reserved.

## 1. Environmental Requirements

Operating Temperature : 0 ~ 40 °C (32 ~ 104 °F)

Storage Temperature : -20 ~ 47 °C (-4 ~ 116 °F)

Line Voltage : 5V DC

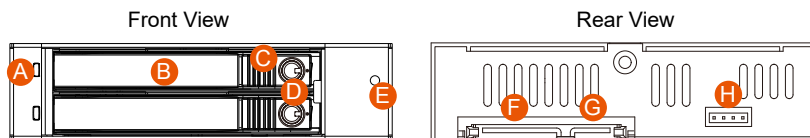
## 2. Product Appearance and Packaging Content

Open the package and you should find the following:

iR2777-S3
iR2777-S3 Device x 1 ( with removable drive tray enclosed x 2)
Quick Installation Guide x 1
Screws and key

- Please check the product and accessories for any defect or missing parts. If you have any questions, please contact your product supplier.
- Please visit the official website ([www.raidon.com.tw](http://www.raidon.com.tw)) to download drivers and other related resources.

### Product View



- A. LED Indicator
- B. Removable drive tray
- C. HDD Tray Ejection

- D. HDD tray key lock
- E. Mute Button
- F. 15 PIN Power Connector

- G. SATA Port
- H. RAID Switch

## LED Indicators :

Constant	HDD Status Light	Buzzer
HDD Idle	Blue light always on	N/A
Data access	Purple light flashing	N/A
No hard drive / hard drive failure	Red light always on	ON
Rebuilding - Source	Blue light always on	N/A
Rebuilding - Target	Red light flashing	N/A

### 3. Hardware Requirements and Precautions

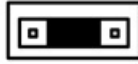
1. Computers or servers with SATA I & SATA II & SATA III.
2. Hard drive with SATA I & SATA II & SATA III
3. You are strongly advised to set the storage mode (the default is the Independent mode) before using the iR2777-S3.
4. The product allows the user to simultaneously utilize two hard drives manufactured by different companies. However, if the user expects better efficiency, we strongly recommend the users to use hard drives manufactured by the same manufacturer.
5. Please make sure that the two hard drives are free from bad blocks or defects prior to installation in order to avoid system crashes or data loss.
6. The actual storage capacity of iR2777-S3 recognized by the system may differ from the total capacity stated on the hard drives combined once the drives have been formatted.
7. It is highly recommended for users to back up important data contained within their iR2777-S3 unit on a regular basis or whenever the user feels necessary to a remote or a separate storage device. RAIDON will not be responsible for any lost of data caused during the use of the unit or the recovery of the data lost.

**Note :**

Once the drive mode configuration has been completed, re-configuration using the same hard drives to set the drive mode will result in complete data loss. If you must change the drive mode, make sure to backup all data prior to the mode change.

## 4. RAID Mode Setting

RAID 0 Mode



RAID 1 Mode



Please set the RAID level through the jumper on the back of the machine. The factory default is RAID 1. There are four pin feet on the back of the machine to set the RAID level. To set the RAID 0 mode, please select the center side; if you want to set the RAID 1 mode, please use the right two.

### 1. RAID 1 Mode

- 1). Place two new hard drives into iR2777-S3 and strongly suggest you to use two identical hard drives to get the equal capacity. If the capacity is different, iR2777-S3 is downward to the small hard drive capacity.
- 2). Under RAID 1 mode, two hard drives has the identical information as one to mirror to the other one, therefore each of the hard drive failed is still able to function normally. When you replace the failed hard disk to the new one the system automatically rebuilding the data to the newly place hard disk.

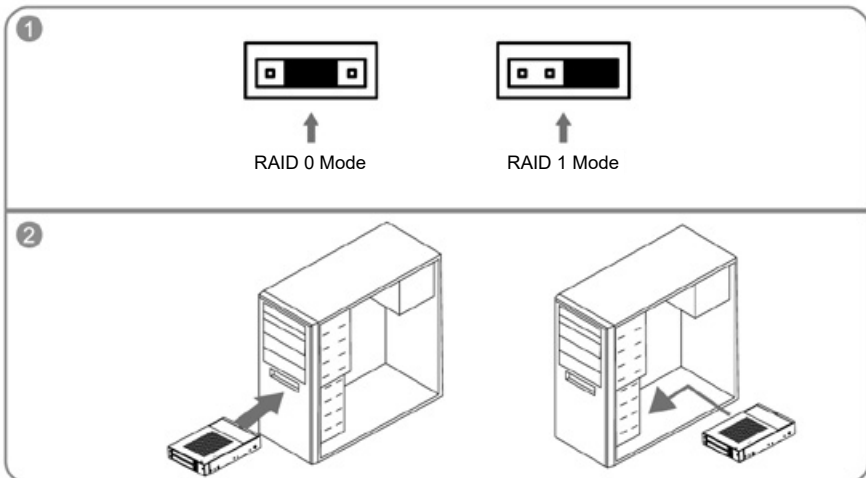
### 2. RAID 0 Mode

- 1). Place two new hard drives into iR2777-S3 and strongly suggest you to use two identical hard drives to get the equal capacity. If the capacity is different, iR2777-S3 is downward to the small hard drive capacity.
- 2). Under RAID 0 mode, capacity is add up to a one big volume, also with the feature of faster read / write performance efficient.

## 5. Hardware Installation Procedure

Please install iR2777-S3 as the following instruction.

- Step 1 Choose the RAID mode with RAID switch on the back panel. The default value is RAID 1.
- Step 2 Install the product unit into the computer chassis and make the necessary connections and mount the product unit properly and securely to the bay position desired.

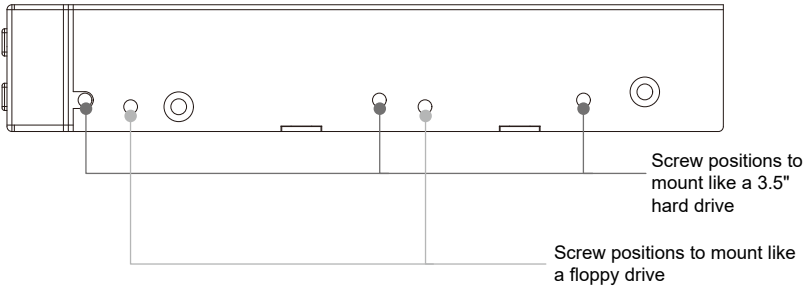


- Step 3 For 2.5" HDD/SSD, please secure it by use four the smaller screws included in the accessory kit.
- Step 4 Re-insert the removable tray when completed and make sure the tray is securely inserted into the appropriate position.
- Step 5 When hardware installation is completed, you can turn on the power of the main unit to proceed with relevant settings and applications.
- Step 6 Installation completed. Your operating system should automatically detect the hard drives within. Please proceed to format the drives. Once formatting is completed, you may then start to operate the device.

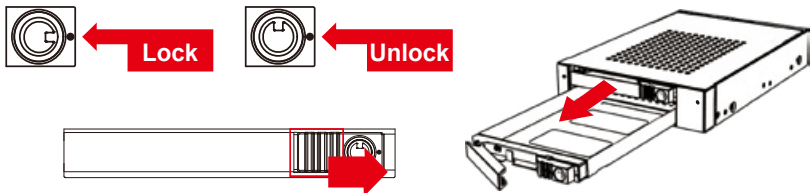
※ Note :

1. We do not recommend users to disassemble the device without proper instructions and authorization. The manufacture warranty will not cover the damages caused by unauthorized disassembling.
2. To prevent the device from malfunction, please make sure the device is connected with a direct and dedicated power connection of a stable power input.

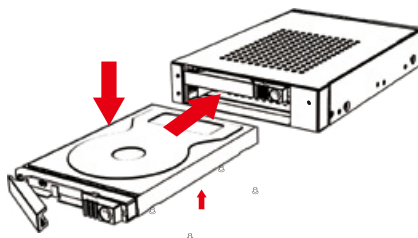
### ❖ Mounting Positions



3



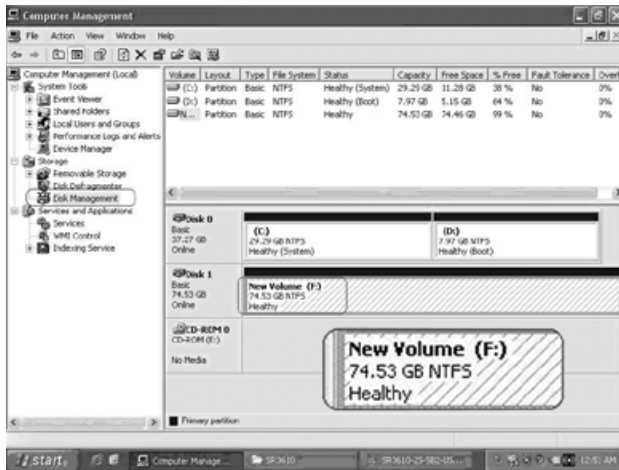
4



## 6. Computer Set Up

When the hardware setup for iR2777-S3 is complete, you are now ready to turn the machine on. After the hardware installation is complete, the iR2777-S3 will be treated as one single hard drive. Set the hard drive to AUTO in the computer's BIOS. When the computer is turned on, the system will retrieve the following information:

1. In iR2777-S3, the installed hard drive can be detected by the Device Manager of Computer Management for Windows.
2. Customers can choose to format the hard drive by using the Disk Management tool of the operating system before using the iR2777-S3.



At this point, the installation process is completely finished. The user can freely retrieve and save data to iR2777-S3 just like retrieving and saving data to a regular hard drive. If the user experiences any abnormality during the operation, please refer to the trouble shooting Q&A section in Appendix.

## 7. GUI Monitoring Software and Firmware Update

You can install GUI software to monitor the status of iR2777-S3. This can be done by installing software from CD.

※ The HDD1 equals to Pri HDD and HDD2 equals to Sec HDD.

### 1. System Status

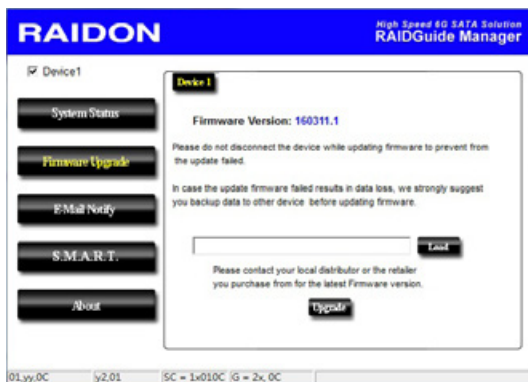
This GUI will auto detects the connected iR2777-S3 and reveals relative information accordingly.



### 2. Firmware Upgrade

You may update the Firmware via this GUI, simply click on “Load” button to locate the firmware file to proceed. After update is finished, you may restart the power properly to operate with newly updated firmware.

※ Caution : Any random firmware updates may cause device in malfunction, it is strongly suggested not to update device firmware if device is operating properly.





### 3. E-Mail Notify

Configuring an e-mail address for notification of drive malfunctioning or being removed.

3-1 Options - Settings: Set the mail server.

- 1). Insert "Outgoing" SMTP and e-mail name and address.
- 2). If it is passwords required, select the option "SMTP Login Authentication" and insert the passwords.



3). When the configuration completed, click on the "OK" button to save.

※ Device must be connected in operational states during configurations to take effects.

3-2 Options - Hard Disk Damage / Device Removal: Sets the e-mail to be notified when the hard drive is damaged or the device is removed.

- 1). Insert the e-mail address of the receiver for notification and click on "+" to add the inserted e-mail address onto the notifying list. (Maximum up to 10 e-mail addresses)



2). Insert the error message and descriptions from the columns of "Subject" and "Contents".

3). When the configuration completed, click on the "OK" button to save.

※ Device must be connected in operational states during configurations to take effects.

## 4. S.M.A.R.T.

**RAIDON** High Speed 6G SATA Solution  
**RAIDGuide Manager**

Device 1

System Status

Firmware Upgrade

E-Mail Notify

**S.M.A.R.T.**

About

Warning

SMART - HDD2 : ST9160214AS Updates after 16 seconds

ID	Value	Worst	Threshold	RAW	Status
01 Raw read error rate	99	99	6	000000640018	Good
03 Spinup time	99	99	0	000000000000	Good
04 Start/Stop count	78	78	20	000000005A20	Good
05 Reallocated sector count	38	38	36	00000000902	Alert
07 Seek error rate	100	253	30	000000037CEE	Good
09 Power on hours count	100	100	0	000000000049	Good
0A Spinup retry count	100	100	97	000000000000	Good
0C Power cycle count	78	78	20	00000000059C	Good
B9 End-to-End error / IQECC	100	100	99	000000000000	Good
B8 Repaired Unrecoverable Ex	1	1	0	00000000017E	Good
B0 Command Timeout	100	89	0	001800210136	Good
E0 High Fly Writes	100	100	0	000000000000	Good
FE Airflow Temperature	71	53	45	00001D1C001D	Good
BF G-sense error rate	99	99	0	0000000000FF	Good

5x,15 y3,01 SC = 1x0115 IG = 2x, 15

## 5. About Indicates GUI Management Software version

**RAIDON** High Speed 6G SATA Solution  
**RAIDGuide Manager**

Device 1

System Status

Firmware Upgrade

E-Mail Notify

**S.M.A.R.T.**

About

RAID Management Software

Version : v0.50.11.2

**RAIDON**  
TECHNOLOGY, INC.

Copyright © 2008-2010 RAIDON Technology, Inc.  
All Rights Reserved.

5x,18 y3,01 SC = 1x0118 IG = 2x, 18

## 8. Frequently Asked Questions

### Unstable system after connecting iR2777-S3

- Q1. After installing iR2777-S3, we are unable to start the computer or the computer can not locate iR2777-S3 upon startup.
- A:
1. Please check whether the SATA Cable connection cables are properly connected to the computer system and whether SATA drives are functioning normally.
  2. If everything is functioning properly but the user still can not start the computer system, then the problem might be the system incompatibility. If such incompatibility takes place, please contact our technical support department.
- Q2. When the iR2777-S3 is in use, the computer system is functioning normally but the iR2777-S3 access speed is abnormal.
- A:
- Please first check whether the iR2777-S3 is in the progress of executing data auto-rebuild.
1. Please examine if the length of the connection cables, SATA cable that connect the drives to the computer system is too long and whether the specification these cables complies with the requirements.
  2. If both the lengths and specification of the cables are checked out ok, please turn off iR2777-S3 and remove the hard drive from iR2777-S3. Test the hard drive directly with the computer system since it might be the bad sectors in the hard drive that are causing the longer than normal system down time.

### Hard Drive Failure

- Q1. Under the mirror mode (RAID 1), what will be the system's total storage capacity when adding a brand new hard drive?
- A:
1. The total storage capacity for iR2777-S3 is determined by the storage capacity of the primary hard drive installed during the initial usage.
  2. The storage capacity will not increase after initial installation even when place a brand new hard drive with larger storage capacity.
- Q2. Why does the error message appear when I installed the second hard drive?
- A: The storage capacity of the second hard drive must be larger than the first hard drive. Otherwise, iR2777-S3 can not rebuild the new hard drive.

### About Auto Rebuilding Function

- Q1. What will happen if we turn off the computer's power while iR2777-S3 is still executing data auto rebuilding?
- A: In the mirror mode (RAID 1), if the power is out of the auto rebuilding process, the controller will remember when completion percentage of the auto rebuilding process and resume the rebuilding process when the power is back on.
- Q2. Is it possible to lose any part of the data during the data auto rebuilding?
- A: The data auto rebuilding function will copy data from one sector to another sector. Technically speaking, the data will not be lost during the auto rebuilding process. However, if the original hard drive is detected with bad sectors during the rebuilding process, iR2777-S3 will make hypothetical duplication instead of treat the bad sectors as hard drive failure. Therefore, the data stored in the bad sectors could potentially be lost during rebuilding.

## 關於這份手冊

感謝您使用 RAIDON 的產品。本手冊將介紹 InTANK iR2777-S3 產品。在您開始使用 iR2777-S3 產品前，建議您先閱讀過本手冊。手冊裡的資訊在出版前雖已被詳細確認，實際產品規格仍將以出貨時為準；任何產品規格或相關資訊更新請您直接到 [www.raidon.com.tw](http://www.raidon.com.tw) 網站查詢，本公司將不另行通知。若您想獲得 RAIDON 最新產品訊息、使用手冊、軟體或對 RAIDON 產品有任何疑問，請您聯絡當地供應商或到 [www.raidon.com.tw](http://www.raidon.com.tw) 取得相關訊息。

本手冊相關產品內容歸 銳銓科技股份有限公司 版權所有

## 1. 環境需求

工作溫度：0 ~ 40 °C (32 ~ 104 °F)

儲存溫度：-20 ~ 47 °C (-4 ~ 116 °F)

工作電壓：5V DC

## 2. 產品外觀及包裝內容

打開包裝外盒後，包裝內容應包含下列組件：

iR2777-S3
iR2777-S3 產品本體 X1( 內含抽取盒 x2)
快速安裝導引 x 1
螺絲及鑰匙

- 請確認相關配件與產品本身是否有受損或配件缺少，若有任何疑問請與本產品供應商聯絡。
- 請前往官網 ([www.raidon.com.tw](http://www.raidon.com.tw)) 下載驅動程式以及其餘相關資源。

### 正面與背面示意圖



- A. LED 指示燈
- B. 硬碟抽取盒把手
- C. 頂出按鍵
- D. 硬碟抽取盒鑰匙孔
- E. 靜音按鈕

- F. SATA 15Pin 電源輸入埠
- G. SATA 連結埠
- H. RAID 模式設定

燈號一覽表：

狀態	硬碟狀態燈	蜂鳴器
硬碟閒置	藍燈恆亮	N/A
資料存取	紫燈閃爍	N/A
無硬碟 / 硬碟故障	紅燈恆亮	鳴叫
資料重建 - 來源碟	藍燈恆亮	N/A
資料重建 - 目標碟	紅燈閃爍	N/A

### 3. 硬體需求與注意事項

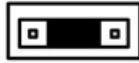
1. 電腦或伺服器具備 SATA I、SATA II 或 SATA III 介面。
2. 具備 SATA I、SATA II 或 SATA III 介面的硬碟。
3. 強烈建議使用 iR2777-S3 前先設定好 RAID 模式 (預設值是 RAID 1)。
4. 本系統允許使用不同廠牌的硬碟。但如果要獲得更好的效能，我們強烈建議使用相同廠牌型號的硬碟。
5. 安裝硬碟前請先確認所使用的硬碟並無壞軌或是其他問題，以免導致系統損毀或資料遺失。
6. 硬碟格式化後，iR2777-S3 的總使用儲存容量或許會與硬碟容量加總後的有所不同。
7. 強烈建議除了使用 iR2777-S3 的資料儲存功能外，請針對重要資料備份到另一個儲存裝置上或遠端備份，雙重備援您重要的資料。若您儲存在 iR2777-S3 的資料損毀或遺失，RAIDON 將不負任何的責任。

注意：

一旦使用模式確認後，使用相同的硬碟進行模式切換將會導致資料遺失。如果需要進行模式變更，請於變更前先進行資料備份。

## 4. 設定 RAID 層級

RAID 0 Mode



RAID 1 Mode



請透過機器後面的跳線來設定 RAID 層級。出廠預設值是 RAID 1。機器背面有四根 pin 腳用來設定 RAID 層級，若要設定 RAID 0 模式，請選用中央面兩根；若要設定 RAID 1 模式，請選用右側兩根。

### 1. RAID 1 模式

- 1). 將新的硬碟放入 iR2777-S3 中。強烈建議您使用兩顆相同的硬碟，以便取得對等的容量。如果兩顆硬碟的容量不同，iR2777-S3 將會以小容量的硬碟為依據。
- 2). RAID 1 模式下，兩顆硬碟是鏡射關係因此擁有相同的資料，因此有一顆硬碟損毀仍然可以正常運作。當放入新硬碟取代損毀硬碟後，系統會自動將資料重建到新的硬碟。

### 2. RAID 0 模式

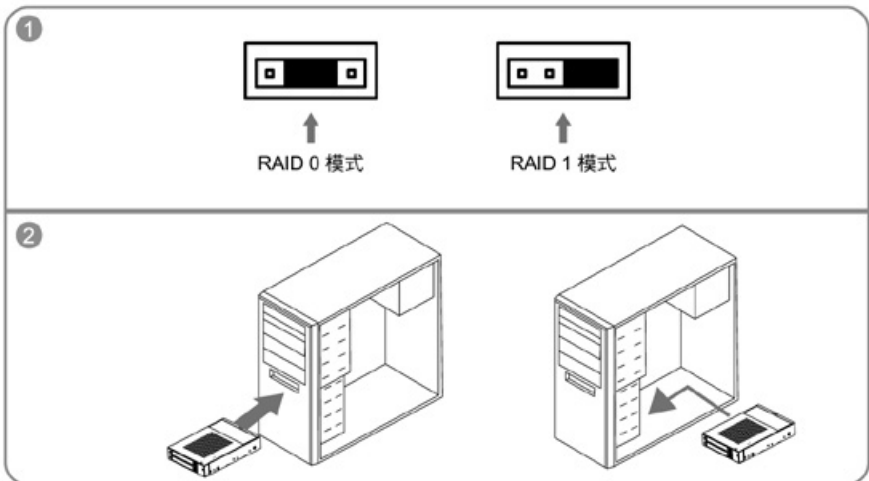
- 1). 將新的硬碟放入 iR2777-S3 中。強烈建議您使用兩顆相同的硬碟，以便取得對等的容量。如果兩顆硬碟的容量不同，iR2777-S3 將會以小容量的硬碟為依據。
- 2). RAID 0 模式下，兩顆硬碟的容量會被加總成一個大儲存容量，並且提供更佳的存取效能。

## 5. 硬體安裝

請參照下列步驟，完成 iR2777-S3 的硬體安裝：

步驟 1 請使用背板上的 RAID 控制鍵選擇 RAID 0 或 RAID 1 模式，原廠預設值為 RAID 1。

步驟 2 將主體裝置在機殼上，連接相關連接線，並確認固定螺絲是否鎖上。



步驟 3 在抽取盒上安裝 2.5 吋硬碟，請使用 4 顆零件包內附的小顆螺絲加以固定；再將抽取盒裝回 iR2777-S3。

步驟 4 確認完成後請插回抽取盒，並確認抽取盒確實插入且固定在適當位置。

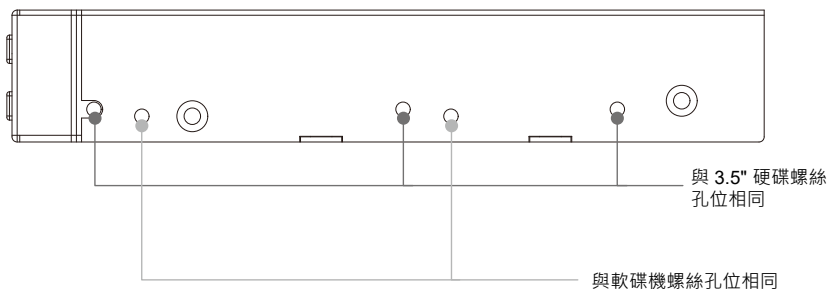
步驟 5 硬體安裝完成。您可開啟電源進行相關設定與應用。

步驟 6 完成。你的作業系統將會自行辨識硬體，辨識成功後請先完成硬碟格式化，完成後即可使用。

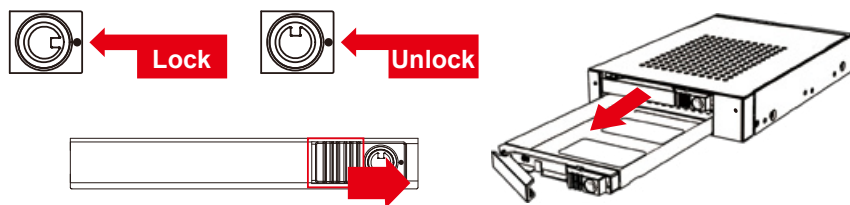
Note :

1. 我們不建議使用者在未經授權的情況下自行拆卸系統，如未經授權自行拆卸所導致的損毀將不在保固之列。
2. 為了防止系統發生問題，請確保系統的電源供應是穩定且獨立的。

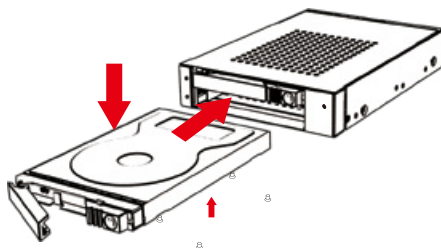
※ 螺絲孔位說明



3



4

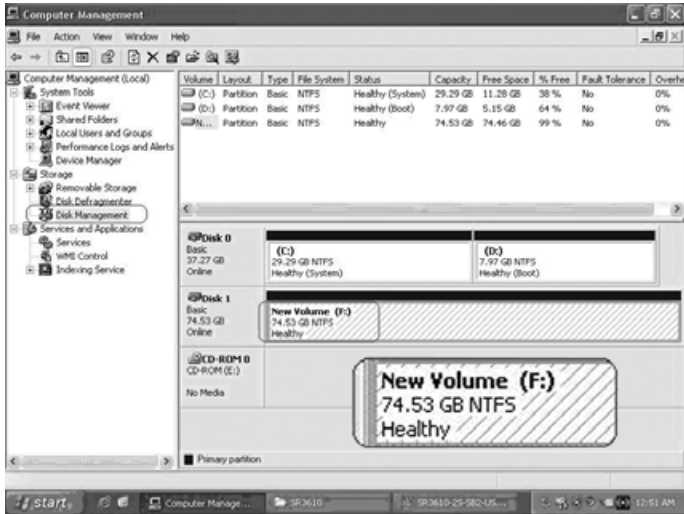


## 6. 電腦設定

當 iR2777-S3 的硬體安裝完成，即可準備進行開機動作。

硬體安裝完成後，將 BIOS 的硬碟偵測設定為自動，iR2777-S3 將會被視為如同一顆硬碟一般。當電腦開機後，系統會顯示下列偵測訊息：

1. 安裝在 iR2777-S3 中的硬碟能夠被 Windows 的裝置管理員偵測到。
2. 使用 iR2777-S3 前，使用者可以透過磁碟管理選擇硬碟的格式。



到此完成整個安裝程序。使用者可以如同存取一般硬碟般的使用 iR2777-S3。如果使用上仍有問題，請參閱附件的 Q&A。



## 7. GUI 功能說明與韌體更新

使用者可以透過光碟來安裝 GUI 軟體，藉此監控 iR2777-S3 的狀態。

※ HDD1 等於 Pri 硬碟，HDD2 等於 Sec 硬碟。

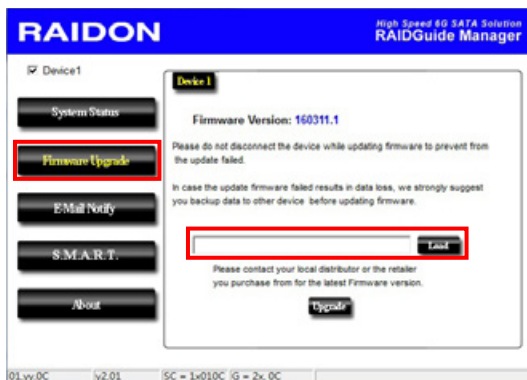
### 1. 系統狀態

GUI 會自動偵測 iR2777-S3 並且顯示相關資訊。



### 2. 韌體升級

使用者可以透過此 GUI 進行韌體升級。只需簡單的點選“Load”指定韌體檔案位置後即可進行升級。升級過程或許需要重新啟動系統來完成整個升級程序。



※ 注意：任意更新韌體有可能導致系統運作不正常。強烈建議如果系統運作正常情況下不要進行韌體升級。

### 3. E-Mail 通知

設定 e-mail 帳號來收取系統問題或被移除通知。

3-1 選項 - 設定：設定郵件伺服器。

- 1). 填入 e-mail 相關名稱與完整位置，以及 SMTP 的相關資訊。
- 2). 如果需要密碼，請勾選 "SMTP Login Authentication" 並輸入密碼。
- 3). 相關資訊填寫完成後，點選 "OK"。



※ 設定過程中，系統必須維持在正常運作狀態。

3-2 選項 - 硬碟損毀 / 裝置被移除：設定當硬碟損毀或裝置被移除時獲取通知的 e-mail。

- 1). 在 E-Mail Address 欄位填入要收取通知的 e-mail，點選 "+" 即可增加另一組。(最多可填入 10 組 e-mail)
- 2). 在 "Subject" 與 "Contents" 填入 e-mail 訊息的主旨與內容。



3). 相關資訊填寫完成後，點選 "OK"。

※ 設定過程中，系統必須維持在正常運作狀態。

## 4. S.M.A.R.T.

**RAIDON** High Speed 6G SATA Solution  
RAIDGuide Manager

Device 1

System Status

Firmware Upgrade

E-Mail Notify

**S.M.A.R.T.**

About

SMART - HDD2: ST9160214AS  
Warning Updates after 16 seconds

ID	Value	Worst	Threshold	RAW	Status
01-Flaw read error rate	95	93	6	000006840018	Good
03-Spinup time	99	99	0	00000000000000	Good
04-Start/Stop count	78	78	20	000000005A20	Good
05-Reallocated sector count	38	38	36	000000000902	Alert
07-Seek error rate	100	253	30	000000037CEE	Good
09-Power on hours count	100	100	0	000000000049	Good
0A-Spinup retry count	100	100	97	000000000000	Good
0C-Power cycle count	78	78	20	00000000595C	Good
0B-End-to-End error / IOERC	100	100	99	000000000000	Good
0B-Reported Uncorrectable Er	1	1	0	00000000017E	Good
0C-Command Timeout	100	89	0	001800210138	Good
0D-High Fly Writes	100	100	0	000000000000	Good
0E-Airflow Temperature	71	53	45	00001D1C001D	Good
0F-G-sense error rate	99	99	0	0000000000FF	Good

5x,15 | y3,01 | SC = 1x0115 | G = 2x, 15

## 5. 關於 GUI 軟體版本

**RAIDON** High Speed 6G SATA Solution  
RAIDGuide Manager

Device 1

System Status

Firmware Upgrade

E-Mail Notify

S.M.A.R.T.

About

RAID Management Software

Version : v0.50.11-2

**RAIDON**  
TECHNOLOGY, INC.  
Copyright © 2000-2010 RAIDON Technology, Inc.  
All Rights Reserved.

5x,18 | y3,01 | SC = 1x0118 | G = 2x, 18

## 8. 常見問題

### Q. 是否可以利用 RAID 1 功能來進行硬碟備份？

A: 可以。RAID 1 本身即鏡射功能。若您有硬碟需要利用 RAID 1 進行備份，請將存有資料硬碟放入硬碟 1 (Source) 的位置，設定成 RAID 1 並完成開機後，再把新硬碟放入硬碟 2(Target) 的位置，系統將會自動進行資料備份 (Rebuild)。當 iR2777-S3 重建完成，兩個硬碟內就已經是完全相同資料。

### Q. 是否可以在 RAID 1 下使用單顆硬碟？

A: 可以，但是將會喪失原本 RAID 1 的資料安全功能，建議您在 RAID 1 模式下，應使用兩顆硬碟以確保資料安全。在單顆硬碟下，RAID 1 將無法進行鏡射功能，一旦單一硬碟損毀則內部的資料將全數損毀。建議用戶只要發生有一個硬碟損壞的狀態，應儘快購買一個新硬碟回來更換。

### Q. 當 iR2777-S3 硬碟發生錯誤時，我應該如何處理？

A: 若您使用的是 RAID 0 模式，請您先確認哪顆硬碟發生錯誤並關掉 iR2777-S3 電源，將損毀的硬碟抽出並置換上新的硬碟，再度開啟電源後系統將重建您的 RAID 0 系統，原本的資料將全數遺失。

若您使用的是 RAID 1 模式，請用戶在不關機的情況下直接將損毀的硬碟抽出並置換上新的硬碟，當新硬碟置入後，系統將會自動開始「重建」程序，當重建完成，即可正常使用。請注意，當系統處於資料重建中時，請勿將任一硬碟抽出，以確保資料的完整性。

**RAIDON**  
Your Data Security Guardian  
[www.raidon.com.tw](http://www.raidon.com.tw)